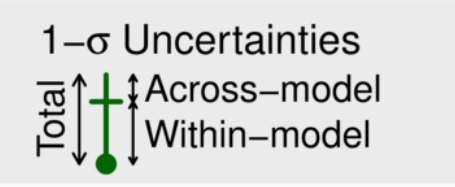
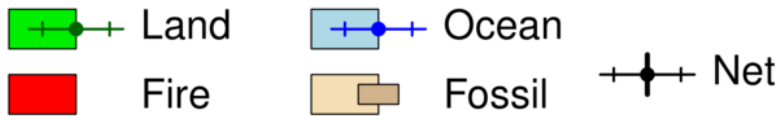
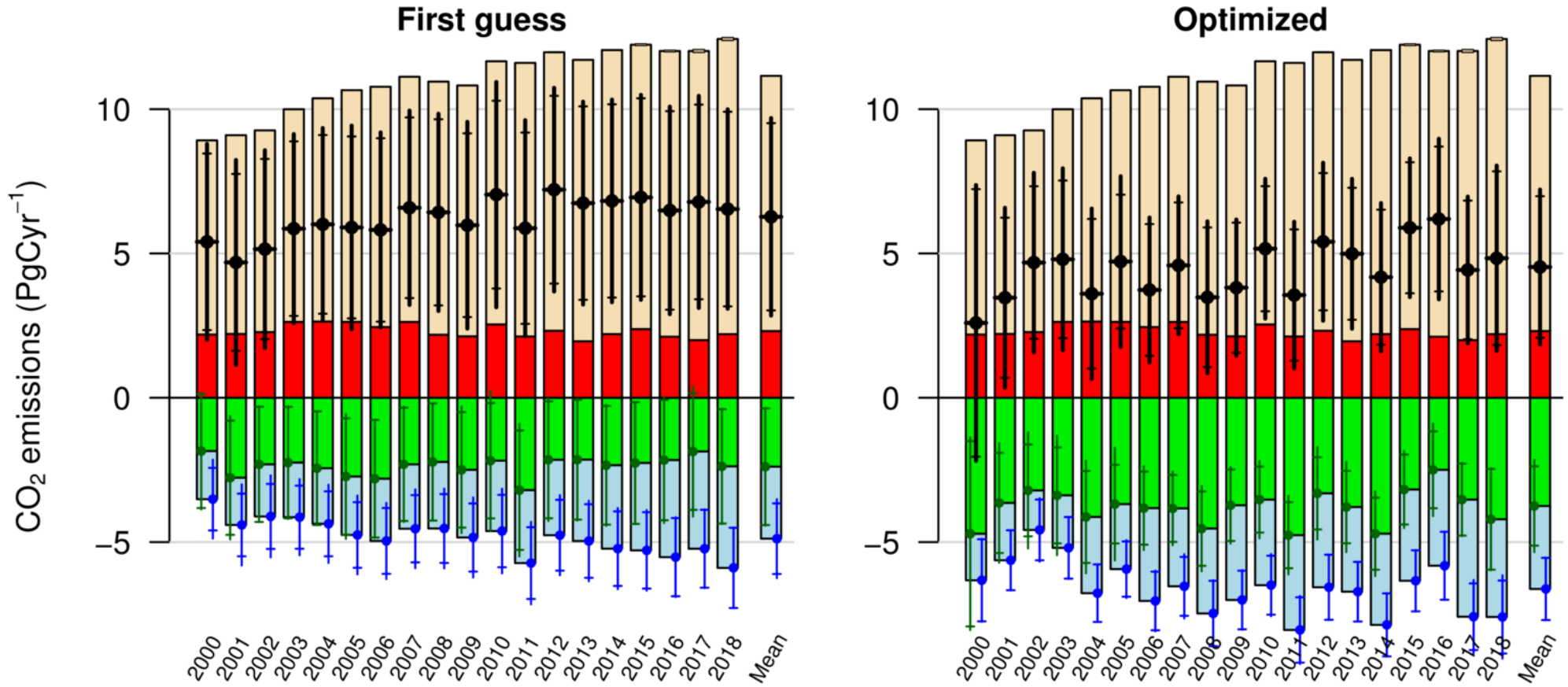


Global annual total emissions



CarbonTracker CT2019B
Created 2020-Dec-16



Year	First Guess	Final Estimate	Fire Emission	Fossil Emission	Total Flux
2000	-3.51 ± 3.39	-6.32 ± 4.78	2.19	6.73 ± 0.00	2.59 ± 4.78
2001	-4.41 ± 3.55	-5.63 ± 3.12	2.21	6.88 ± 0.00	3.47 ± 3.12
2002	-4.11 ± 3.42	-4.58 ± 3.11	2.27	6.99 ± 0.00	4.69 ± 3.11
2003	-4.14 ± 3.27	-5.20 ± 3.15	2.63	7.37 ± 0.00	4.80 ± 3.15
2004	-4.37 ± 3.33	-6.77 ± 2.95	2.64	7.73 ± 0.00	3.61 ± 2.95
2005	-4.75 ± 3.53	-5.94 ± 2.96	2.63	8.03 ± 0.00	4.72 ± 2.96
2006	-4.96 ± 3.37	-7.04 ± 2.51	2.45	8.33 ± 0.00	3.74 ± 2.51
2007	-4.54 ± 3.36	-6.53 ± 2.39	2.63	8.50 ± 0.00	4.59 ± 2.39
2008	-4.53 ± 3.42	-7.47 ± 2.63	2.19	8.77 ± 0.00	3.48 ± 2.63
2009	-4.84 ± 3.58	-7.01 ± 2.36	2.13	8.69 ± 0.00	3.82 ± 2.36
2010	-4.62 ± 3.90	-6.49 ± 2.42	2.54	9.11 ± 0.01	5.16 ± 2.42
2011	-5.73 ± 3.73	-8.04 ± 2.54	2.12	9.48 ± 0.01	3.56 ± 2.54
2012	-4.76 ± 3.51	-6.57 ± 2.74	2.32	9.65 ± 0.02	5.41 ± 2.74
2013	-4.96 ± 3.50	-6.72 ± 2.60	1.96	9.75 ± 0.01	4.99 ± 2.60
2014	-5.23 ± 3.50	-7.87 ± 2.57	2.21	9.84 ± 0.01	4.18 ± 2.57
2015	-5.29 ± 3.52	-6.34 ± 2.40	2.38	9.86 ± 0.03	5.89 ± 2.40
2016	-5.52 ± 3.56	-5.82 ± 2.78	2.11	9.90 ± 0.03	6.19 ± 2.78
2017	-5.23 ± 3.62	-7.59 ± 2.54	2.00	10.02 ± 0.05	4.43 ± 2.54
2018	-5.89 ± 3.40	-7.60 ± 3.21	2.20	10.23 ± 0.05	4.84 ± 3.21
Mean	-4.88 ± 3.41	-6.62 ± 2.68	2.31	8.84 ± 0.01	4.53 ± 2.68

Results Summary (all units PgC yr⁻¹)

Data Source: NOAA ESRL